

# Barista Selection Freeze Dried Coffee Sticks (500)

Freeze Dried Coffee 500x

## PRODUCT DESCRIPTION

Freeze Dried Coffee portion in a printed stick

<b>Brand</b>	Portion Solutions Ltd
<b>Manufacturer Product Code</b>	60117971 (TF390)
<b>Product Type</b>	Drink
<b>Product Category</b>	Tea & Coffee
<b>Storage Type</b>	Ambient
<b>Erudus ID</b>	dd357ea5c3c34ce1bc4584f2df9b7fc6
<b>Specification Type</b>	Legacy

**Outer Case GTIN** 5050415041865



## INGREDIENTS

### Ingredient Declaration

100% soluble solids of freeze dried coffee

## ALLERGENS

Product Contains:

<b>Celery/Celeriac</b>	No	<b>Mustard</b>	No
<b>Cereals Containing Gluten</b>	No	<b>Nuts (Tree)</b>	No
<b>Barley</b>	No	<b>Almond nuts</b>	No
<b>Oats</b>	No	<b>Brazil nuts</b>	No
<b>Rye</b>	No	<b>Cashew nuts</b>	No
<b>Wheat (including Spelt and Khorasan)</b>	No	<b>Hazelnuts</b>	No
<b>Gluten content &lt;20ppm</b>	Yes	<b>Macadamia (Queensland) nuts</b>	No
<b>Crustacea</b>	No	<b>Pecan nuts</b>	No
<b>Eggs</b>	No	<b>Pistachio nuts</b>	No
<b>Fish</b>	No	<b>Walnuts</b>	No
<b>Lupin</b>	No	<b>Peanuts</b>	No
<b>Milk</b>	No	<b>Sesame Seeds</b>	No
<b>Molluscs</b>	No	<b>Soybeans</b>	No
		<b>Sulphur Dioxide and Sulphites</b>	No

## SUPPLEMENTARY INGREDIENT INFORMATION

<b>Palm Oil</b>	No
<b>Hydrogenated Vegetable Oil/Fat</b>	No
<b>GM Protein/DNA</b>	No

## ADDITIVES

Product Contains:

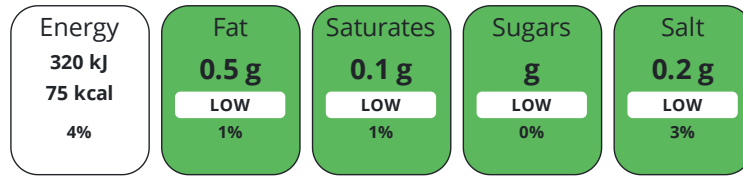
<b>Artificial Antioxidants</b>	No	<b>Artificial Flavourings</b>	No
<b>Artificial Colours</b>	No	<b>Artificial Preservatives</b>	No
<b>Artificial Flavour Enhancers</b>	No	<b>Artificial Sweeteners</b>	No

DIET  
SUITABILITY

<b>Suitable for Coeliacs</b>	Yes	<b>Halal Diet</b>	No
<b>Kosher Diet</b>	No	<b>Vegetarian Diet</b>	Suitable for
<b>Vegan Diet</b>	Suitable for		

NUTRITIONAL  
INFORMATION

Each 100g/ml portion contains:



of your reference intake.

Typical values per 100g/ml : Energy 75kcal / 320kj

Nutrient	per 100g/ml	RI per 100g/ml
<b>Energy (kJ)</b>	320 kJ	4%
<b>Energy (kcal)</b>	75 kcal	4%
<b>Fat</b>	< 0.5 g	1%
of which Saturates	< 0.1 g	1%
of which Mono-unsaturates	< 0.1 g	
of which Polyunsaturates	< 0.1 g	
<b>Carbohydrate</b>	4.5 g	2%
of which Sugars	0 g	0%
of which Polyols	0 g	
of which Starch	4.5 g	
<b>Fibre</b>	< 0.5 g	
<b>Protein</b>	14.6 g	29%
<b>Salt</b>	0.2 g	3%

SUPPLEMENTARY  
NUTRITIONAL  
INFORMATION

HFSS (HIGH IN  
FAT, SALT AND  
SUGAR)

<b>HFSS Status</b>	No
--------------------	----

HANDLING &  
STORAGE  
INFORMATION

**Directions For Use**

mix with hot (not boiling) water

**Storage Instructions**

store in a cool, dry place away from direct sunlight

**Shelf Life from Time of Production** 365 Days

ACCREDITATIONS/  
CERTIFICATIONS/  
ASSURANCE  
SCHEMES



ORIGIN

**Product Country of Origin/Place of** Other

**Provenance**

**Additional Origin Details**

Packed in the UK

PRODUCT CHARACTERISTICS	Standards Testing						
	<b>Do you undertake trend analysis of microbiological results?</b>	No	<b>Is shelf life testing undertaken?</b>		No		
CONFIGURATION	Case Configuration		Inner Pack Configuration				
	<b>Total Quantity of Inner Components in Outer Case</b>	500 Units					
	<b>Is the Outer Case Splittable?</b>	No					
PRODUCT WEIGHTS	Inner Component						
	<b>Variable Weight Consumer Item</b>	No					
	<b>Weight/Volume</b>		1.3g coffee per stick x 500 sticks per case				
	Outer Case						
	<b>Outer Case Gross Weight</b>	1.02 kg					
PRODUCT DIMENSIONS	Inner Component						
	<b>Inner Component Depth</b>	102 mm					
	<b>Inner Component Width</b>	23 mm					
	<b>Inner Component Height</b>	6 mm					
	Outer Case						
	<b>Outer Case Depth</b>	298 mm					
	<b>Outer Case Width</b>	185 mm					
PALLET INFORMATION	<b>Outer Case Height</b>	185 mm					
	<b>Quantity of Cases Per Pallet Layer</b>	20 Cases	<b>Pallet Height</b>	1.45 MTR			
	<b>Quantity of Layers Per Pallet</b>	7 Layers	<b>Pallet Gross Weight</b>	173 kg			
	<b>Quantity of Cases Per Pallet</b>	140 Cases					
PACKAGING	Inner Component Packaging						
	<b>Type</b>	<b>Materials</b>	<b>Weight</b>	<b>Recycled Plastic %</b>	<b>Recyclable</b>	<b>Returnable</b>	<b>Composite</b>
	Foil	Other	0.48 g	- %			
	Outer Case Packaging						
	<b>Type</b>	<b>Materials</b>	<b>Weight</b>	<b>Recycled Plastic %</b>	<b>Recyclable</b>	<b>Returnable</b>	<b>Composite</b>
	Case	Paper/Cardboard	135 g	- %			
	Transport Packaging						
	<b>Type</b>	<b>Materials</b>	<b>Weight</b>	<b>Recycled Plastic %</b>	<b>Recyclable</b>	<b>Returnable</b>	<b>Composite</b>
	Other	Wood	30000 g	- %			
	OTHER INFORMATION CONTACT INFORMATION	Address		Technical Contact			
Portion Solutions Ltd Stafford Park 6 Stafford Park Telford Shropshire TF3 3AT England		Magdalena Piekielek Head of Technical, Health & Safety Magdalena.piekielek@portionsolutions.co.uk					
	P: (Phone) 0044 (0)1952 234100		P: (Phone) 01952979102				

The information on the [Erudus System](#) has been supplied by the manufacturers of the products and, whilst the owners of the Erudus System take steps to ensure the information is regularly updated, they give no warranty and no guarantee that the information is accurate. Product information and ingredients may change, please always read product labels carefully in addition to using the information provided by Erudus.

We do not accept liability for any inaccuracies or incorrect information contained on this site.  
Please visit <http://www.erudus.com/terms-and-conditions> for full terms and conditions.